



3" BORE ACCESSORIES



MOUNTING NUTS

Stud Nut

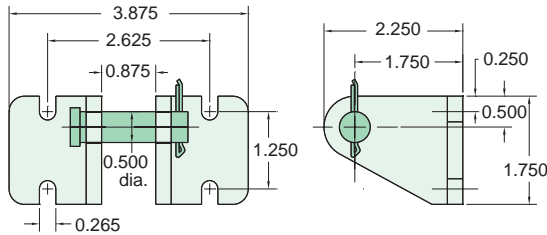
Part Number	Across Flats	Nut Thickness	Nut (Thread)
N24-12	2 1/4"	1/2"	1 1/2-12

Rod Nut

Part Number	Across Flats	Nut Thickness	Nut (Thread)
N08-20	3/4"	5/16"	1/2-20

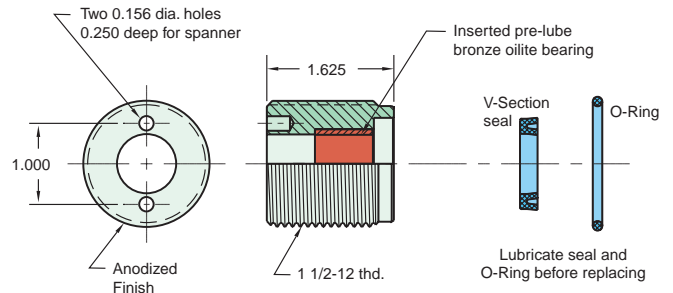
CB-4895

Clevis Bracket
Material: steel, bright zinc plated



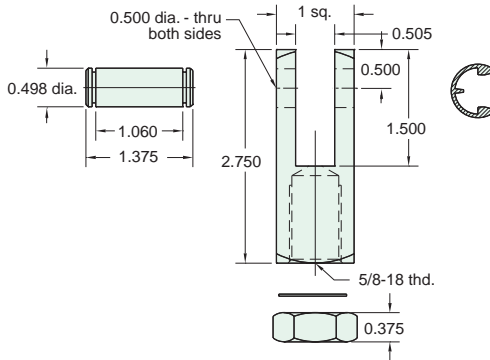
RK-4899

Replaceable Rod Seal
Material: aluminum body



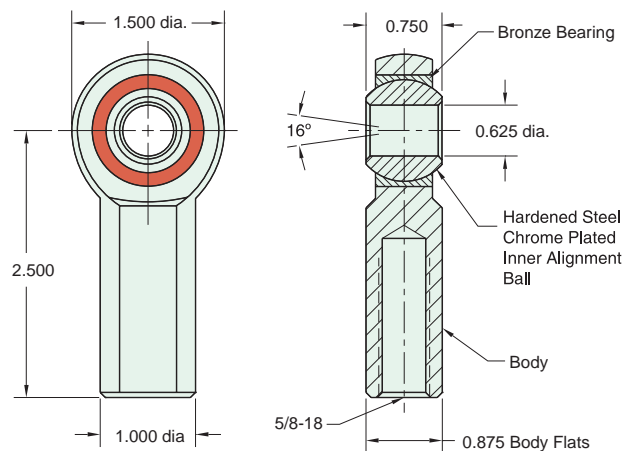
RC-4881

Rod Clevis
Material: steel, bright zinc plated



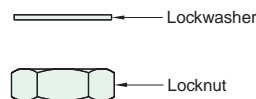
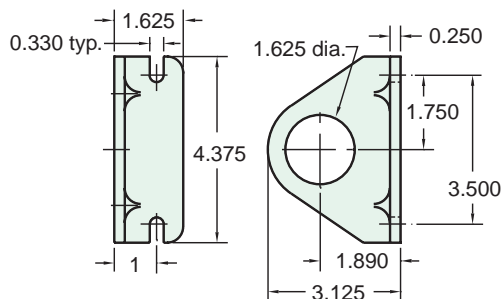
RE-4885

Rod End
Material: steel, bright zinc plated body



FB-4891

Foot Bracket
Material: steel, bright zinc plated



Max. Static Radial Load: 7400 lbs.
Fits Rod Thread Size: 5/8-18